

NEWSLETTER

JANUARY 2012



CFSEI
COLD-FORMED STEEL
ENGINEERS INSTITUTE



2012 – OFFICERS:

- President:** Julie Lowrey, E.I.
Central FL Property Inspection & Services
- Vice President:** Adam Russell, E.I.,
United Structures
- Secretary:** Kenny Pagano, P.E.,
Scosta Corporation
- Treasurer:** Bill Babich, P.E.,
TrusSteel, ITW BCG, Inc.

2012 – BOARD OF DIRECTORS:

- Darden Cobb,**
Loadmaster Systems, Inc.
- Jennifer Zabik, P.E., S.E.,**
AW Solutions, Inc.
- Paul Dalia, P.E.,**
LGSEG, Inc.
- Robert Haug, P.E.,**
Consulting Engineer
- Robert Kelzer,**
General Contractor
- Tamilselvan Samiappan, P.E.,**
ITW BCG, Inc.

IN THIS ISSUE:

- CFSEI FL Chapter Annual Meeting on Feb 9th Pg. 01
- A Look Back at 2011 and What is to Come in 2012 Pg. 02
- 2012 CFSEI Expo Coming to Orlando, FL Pg. 03
- Update on CFSEI Technical Notes Pg. 04
- CFSEI 2012 Awards Program Pg. 05
- CFSEI Atlanta/Southeast Chapter – Lunch Meeting on Feb 2nd Pg. 09

UPCOMING EVENTS:

- Atlanta/Southeast Chapter - Roof Framing Challenges with
Cold-Formed Steel Feb 02, 2012
- 2012 NAHB International Builders’ Show - Orlando, FL Feb 08, 2012
- CFSEI FL Chapter Annual Meeting – Orlando, FL Feb 09, 2012
- 2012 CFSEI Expo – Orlando, FL May 21-22, 2012



CFSEI
COLD-FORMED STEEL
ENGINEERS INSTITUTE

**LOCATION****Rosen Plaza Hotel**

9700 International Drive
Orlando, FL 32819
(407) 996-9700

TITLE**Blast and Progressive Collapse Design of Cold-Formed Steel Structures****CONTINUING**

SFA FBPE Provider # 0005013 and FBPE Course # 0004364 for **1.5 PDH**

EDUCATION

AIA course # SFA1109 and AIA provider # G411 for **1.5 LU/HSW**

SPEAKER

Nabil A. Rahman, Ph.D., P.E. is the Director of Engineering and R&D at Applied Science International (ASI), and its parent company, The Steel Network, Inc (TSN). He also serves as an Adjunct Associate Professor at the Civil Engineering Department of North Carolina State University. He has vast experience in the development of engineering software, as well as the design and analysis of structures against extreme loads

(progressive collapse, blast, Impact and hurricanes). Dr. Rahman has participated in several vulnerability, blast and progressive collapse assessments of commercial and military buildings, and has several publications from this work. He led the development of "SteelSmart® System" engineering software for ASI, and advised on the development of the "Extreme Loading® for Structures" software. Dr. Rahman has given numerous continuing education seminars on Progressive Collapse Design and the Design of Cold Formed Steel Framing Systems to engineering associations around the US and to engineers from around the world. He is currently serving as a member of the Committee on Specification and Committee on Framing of the American Iron and Steel Institute (AISI), the Vice-Chairman of the Cold-Formed Steel Engineers Institute (CFSEI) and a member of ASCE Committee on Cold-Formed Steel.

DATE / TIME**February 9, 2012 (Thursday)**

Registration and Happy Hour (cash bar): 5:30 PM to 6:30 PM (in Regency Foyer)

Dinner served at 6:30 PM (in Salon 5)

Presentation and Discussion: 6:30 PM to 8:30 PM (in Salon 5)

COST

(food and soft drinks included)

Members & Guests: \$35.00 in advance (cannot accommodate walk-ins)

Attendees must **pre-register** with their selection of the following:

Dijon Crusted Chicken

Double Breast of Chicken with Artichoke White Cheddar Sauce and Parsley Angel Hair Pasta

Prime Rib

Slow Roasted Prime Rib au jus with Horseradish Sauce, Two Potato Gratin and Steamed Asparagus

Vegetable Lasagna

Lasagna pasta wrapped around a filling of three cheeses, carrot, squash, zucchini, mushroom, broccoli and red pepper. Served over Chef's Fresh vegetable selection

**All entrees come with a Plaza House salad, warm rolls and butter, Tiramisu cake for dessert, and coffee, hot tea and iced tea*

OVERVIEW

This presentation introduces the concepts and methods of analysis and design of cold-formed steel structures against blast and progressive collapse. The presentation focuses on the design requirements for cold-formed steel mid-rise construction and curtain wall framing in the Department of Defense projects per the Unified Facilities Criteria (UFC) 4-010-01 and 4-023-03. The under-development ASCE Standard for Blast Protection of Buildings will be also discussed. A case study with computer analysis and design calculations will be presented.

Proudly Sponsored by:**Learning Objectives:**

1. Understand main concepts of structural design to mitigate the effects of blast and progressive collapse on buildings.
2. Identify which buildings (based on height and occupancy category) would qualify for progressive collapse design per DoD requirements.
3. Identify which components of building exterior framing qualify for blast design per DoD requirements.
4. Select proper analysis methods and software tools to perform blast and progressive collapse design.

For reservations, register online with your credit card (Visa/MasterCard/American Express) at

<http://www.cfsei.org/florida.htm>

Note: To receive a refund or to have payment applied to the next meeting, cancellations must be made at least (3) days prior to the event.

Otherwise, payment is forfeited.

Upon registration, an e-mail confirmation and receipt will be sent to you. If you have any questions, contact Bill Babich at (800) 755-6001 (X4762)

Our meetings are made possible by our valued sponsors. To become a meeting sponsor, email bbabich@itwbcg.com

A LOOK BACK AT 2011 AND WHAT IS TO COME IN 2012*

Greetings CFSEI Florida Chapter Members and Guests! After serving for several years as Board Member, Secretary and Vice President, I am honored to be serving as 2012 CFSEI Florida Chapter President. In this first newsletter of 2012, let's revisit what we accomplished in 2011 and look ahead to our goals for 2012.

A Look Back at 2011

Looking back on 2011, the CFSEI Florida Chapter is proud to reflect on our accomplishments and what we brought to you - our members. We were fortunate to welcome new Board Members Adam Russell, E.I.T of United Structures, and Darden Cobb of Loadmaster Systems, Inc. We added the benefit to our Florida Chapter Members of being able to access past presentations on our website. We also offered the opportunity for our Florida Chapter Members to attend presentations for free by referring others to join the Florida Chapter. We brought you an all-star lineup of presentations worth FBPE approved PDH, given by expert speakers covering pertinent topics including the following:

- ✓ "Construction Solutions with Cold-Formed Steel Framing" by Don Allen, P.E. of Steel Framing Alliance (SFA)
- ✓ "Galvanize It!" by Tim Lockhart and Mark Mellon of American Galvanizers Association (AGA)
- ✓ "Lessons Learned – Truss Design and Installation to Avoid Disaster" by Sowri Rajan, P.E. of ITW Building Components Group – TrusSteel

- ✓ "Designing Using CFS Software" by Bob Glauz, P.E. of RSG Software, Inc.

Many of you took advantage of these opportunities, and we have been delighted to see some first timers become regular attendees. However, like other professional groups, we struggled with low attendance in 2011. If you design with cold-formed steel and did not take advantage of dinner, PDH, and local networking in your industry for the low cost of \$25, we really want to know why!

A Look Forward to 2012

Just like last year, we are kicking off the New Year right by hosting our annual meeting in conjunction with the International Builders' Show on February 9th, in Orlando. As a thank you to our current members and a welcome to our new members we will be hosting a delicious sit down dinner at the Rosen Plaza Hotel, where our distinguished guest speaker, **Nabil Rahman, Ph.D., P.E.** will present "**Blast and Progressive Collapse Design of Cold-Formed Steel Structures**" worth 1.5 PHD/LU/HSW. Plus we will be offering great raffle prizes including a **FREE copy of ASCE/SEI Standard 59-11 "Blast Protection of Buildings"**.

This year our goal is simple – we want to see more faces in our meetings – period! Therefore, we're trying something new in 2012 to encourage more attendance. **We will be offering our meetings for FREE** (with the exception of the annual meeting on February 9th). Our presentations will still have PDH available and attendees will have the option to buy their own dinner if they wish, but there will be no cost to attend. We hope that you like this idea, and that it will encourage all your co-workers and colleagues to come with you to the rest of our presentations this year! Our Board is

* Julie Lowrey, E.I., Central FL Property Inspection & Services, President (2012), CFSEI FL Chapter

actively planning the remaining meeting topics for the 2012 year so please stay tuned to our email updates!

A Word of Thanks and Acknowledgement

We sincerely appreciate our members and guests and their support of the CFSEI Florida Chapter. Without your attendance, we would not be here. Our mission is to educate engineers on the design of cold-formed steel, and we strive to do that first and foremost in everything we do for you.

Our meetings would not be possible if it were not for the support of our valued sponsors. We appreciate and promote the companies that support our mission and our activities. Please take the time to read their ads in our newsletters, visit their tables, and shake their hands at our meetings. They make what we bring to you possible.

Last but certainly not least, I would like to personally thank and acknowledge our 2011 Board of Directors. Each Board Member is a busy professional, but they still volunteer their time, energy, effort and expertise for a cause they all believe in and support, and that is truly admirable. Our Board is a dedicated, hard-working and respectful bunch, and we are successful because of that. We have accomplished many great things together and I am honored to work with them again in 2012. Please join me in thanking them:

2011 CFSEI Florida Chapter Board Members

Jennifer Zabik (2011 President)
 Julie Lowrey (2011 Vice President)
 Bill Babich (2011 Treasurer)
 Kenny Pagano (2011 Secretary)
 Tamil Samiappan
 Robert Kelzer
 Patricio Romero

Paul Dalia
 Adam Russell
 Darden Cobb
 Sharon Warner

On behalf of the CFSEI Florida Chapter, we are looking forward to what's in store for 2012 and hope to see you all there for it!

2012 CFSEI EXPO COMING TO ORLANDO!

"Save the Date for May 21st and 22nd"

The National CFSEI has decided to have the CFSEI Expo (previously, CFSEI Annual Conference and Meeting) in Orlando this year, which is great news for our Florida Chapter membership! Planning is already underway, and there will really be something for everyone at this year's show, whether you're an engineer, architect, contractor or building official. If you have attended CFSEI National Annual Meetings in the past, you know that they are invaluable to professionals in the cold-formed steel industry.

Educational sessions provided address pertinent topics in our field that are hot issues right now, and that we all need to be up to speed on! Spending 2 days away from the hustle and bustle of the office, immersed in cold-formed steel seminars and discussion, is a recipe for success when you bring that knowledge back to work with you. Plus, we all know how important networking can be, and the perfect opportunity for networking in the cold-formed steel industry is when hundreds of CFS professionals from all over the country are congregated right here in our back yard!

Please mark your calendars and stay tuned for more information coming soon regarding this important event.

CFSEI 2012 AWARDS PROGRAM

The Cold-Formed Steel Engineers Institute (CFSEI), a national organization made up of structural engineers and other design professionals, is accepting nominations for the *CFSEI 2012 Awards Program*. Awards for Engineering Excellence, Construction Innovation, and Distinguished Service will be given. **Nominations are due by January 31, 2012.** Winners will be recognized at the **CFSEI Expo in May 2012** and will be published in the CFSEI Newsletter and Web site, as well as made available to professional journals and press releases.

PURPOSE

The purpose of the *CFSEI Awards Program* is to publicly acknowledge outstanding achievement in creative design, technical innovation, and best practices in the use of cold-formed steel and to publicly acknowledge individuals who have volunteered their time and talent to the CFS industry.

CATEGORIES

1. Design Excellence
2. Construction Innovation, and
3. Distinguished Service

AWARD CATEGORY 1 - Design Excellence

Projects that exemplify excellence in the structural design of new or renovated structures utilizing CFS products. A minimum of one award for Design Excellence (top award) and two awards of Merit (runner up) will be given. The jury may consider awards for both small and large projects so that structures of all scales and uses may be properly recognized for their excellence. The number of awards given will be the judges' decision.

AWARD CATEGORY 2 – Construction Innovation

Use of an innovative product, process, tool, technique, machine, or methodology to advance the CFS industry. The construction innovation must have been used in one or multiple construction projects. A minimum of one award for Design Excellence (top award) and one award of Merit (runner up) will be given.

AWARD CATEGORY 3 – Distinguished Service

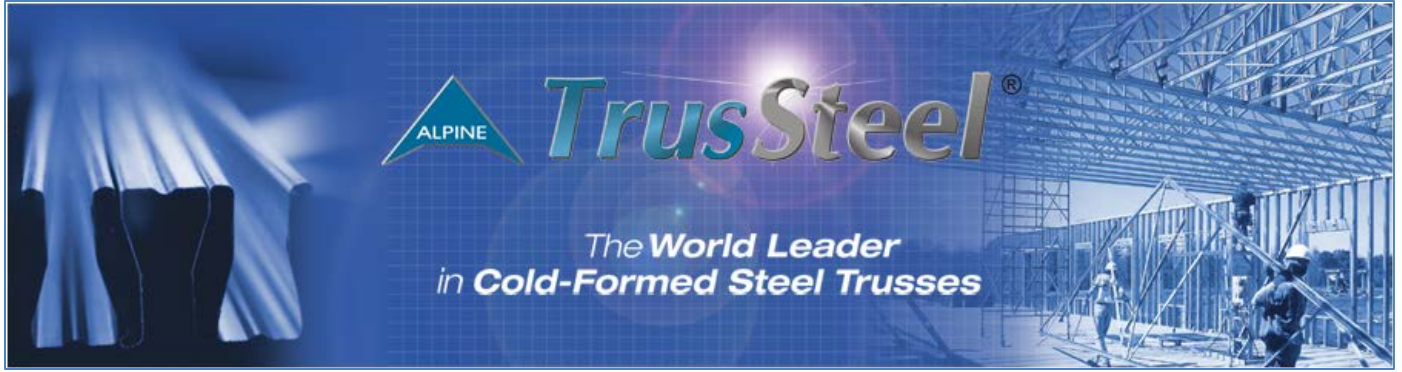
Acknowledge the contributions of an individual who has volunteered their time, talent, and resources to the CFS industry. One Distinguished Service Award will be given.

DEADLINE FOR ENTRIES

Entry packets must be received by 5:00 p.m. on Tuesday, January 31, 2012. All entry packets should be clearly labeled "Submission for 2012 CFSEI Awards Program" and delivered or mailed to the following address:

***2012 CFSEI Awards Program,
Cold-Formed Steel Engineers Institute,
1140 Connecticut Avenue N.W., Suite 705,
Washington, DC 20036.***

Upon receipt of a complete entry submission, CFSEI will send an e-mail confirming such receipt. Representative of winning entries will be notified by e-mail not later than April 1, 2012. The ***CFSEI Awards Program*** winners will be recognized as a part of the May 2012 CFSEI Expo, Representatives of the winning entries and the Distinguished Service Award recipient will be asked to make brief presentations or statements upon receiving their awards. If you have any questions or need clarification about the awards program requirements, please contact Don Allen at dallen@cfsei.org or by telephone at (706) 597-8076.



ALPINE *TrusSteel*[®]

The World Leader
in Cold-Formed Steel Trusses



TSN
The Steel Network

Quality Light Steel Framing Connections and Members
Your Link to the Steel Industry

CALL US TODAY 1-888-474-4876



HILTI Home | Contact Us / Feedback
Hilti USA: (800) 879-8000

Hilti. Outperform. Outlast.



Loadmaster Systems, Inc.



THE COMPLETE STEEL TRUSS SOLUTION

COST-EFFECTIVE DESIGNS

COMPREHENSIVE DESIGN SOFTWARE

COMPLETE RANGE OF COLD-FORMED STEEL PRODUCTS

PROFESSIONAL ENGINEERING AND TECHNICAL SUPPORT

CLEAR SPANS UP TO 80 FEET

100% RECYCLEABLE AND NON-COMBUSTIBLE

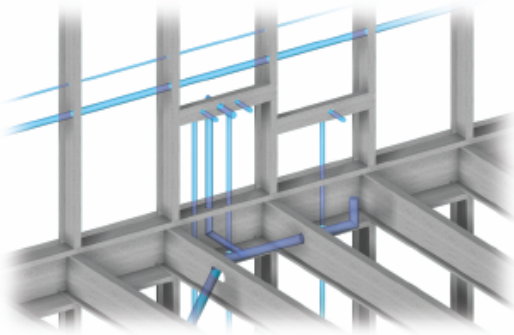


Vertex BD

building fabrication software for cold-formed steel framing

**Featuring the most customizable
BIM framing generator available
for cold-formed steel construction.**

- Generate editable fabrication drawings
- Create accurate material lists
- Integrate with manufacturing equipment
- Streamline production and assembly
- Reduce design errors
- Minimize material waste



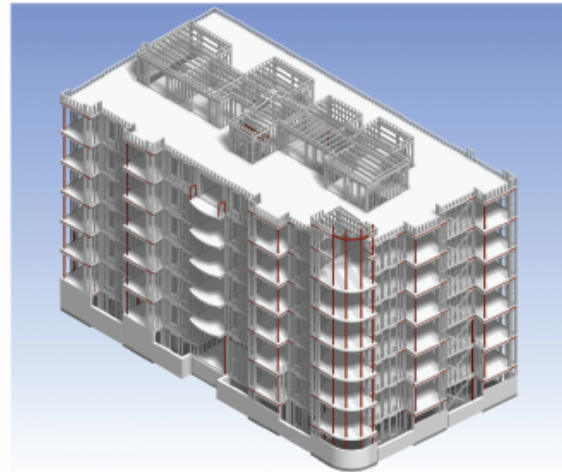
SEE THE NEW

Utility Hole Generator

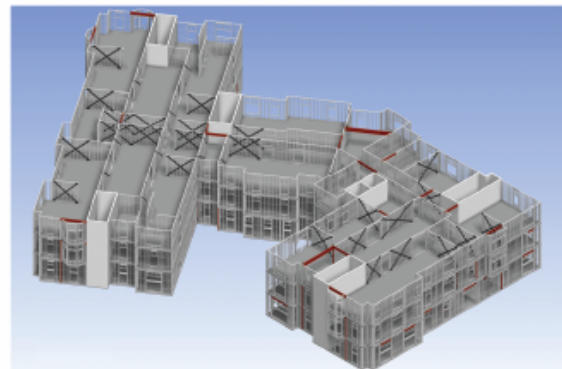
Add a new level of efficiency and accuracy
to building fabrication

Use electrical and plumbing lines to send
hole punching information directly to
manufacturing equipment

Send manufacturing data to
roll formers and sheathing routers



*Georgia Avenue Apartment Building
Cold-Formed Steel framing by Panel Systems, Inc., Woodbridge, VA*



*Roanoke College Dormitory
Cold-Formed Steel framing by Panel Systems, Inc., Woodbridge, VA*

Argos Systems provides:

- software sales and rentals
- on-site training
- customization services
- support and maintenance

Download the 30 day
trial version at
www.argos.com



781.271.9111 www.argos.com

COLD-FORMED STEEL ENGINEERS INSTITUTE • ATLANTA/SOUTHEAST CHAPTER



CFSEI
COLD-FORMED STEEL
ENGINEERS INSTITUTE



ROOF FRAMING CHALLENGES WITH COLD-FORMED STEEL

Date /Time THURSDAY, February 2, 2012

Registration 11:30 am
Presentation Noon – 1:30 pm

Location Maggiano 's Little Italy Restaurant
1601 Cumberland Mall SE, Suite 200
Atlanta, GA 30339-3162
Phone: 770-799-1580

Cost: **Students/Faculty:** No Cost
(Valid student/faculty ID required)

Members: \$30.00 in advance/\$35.00 at the door. *Note: Member rates will be offered to those joining at this meeting. \$30 rate is thru 1/26.*

Others: \$35.00 in advance/\$40.00 at the door. Buffet Lunch is included in cost. *\$35 rate is thru 1/26.*

Topic: **Roof Framing Challenges with Cold-Formed Steel**

Speaker **Bill Babich, P.E.:** Director of Engineering for TrusSteel.



Presentation Highlights: It is a challenge to complete a complex truss project but it can be accomplished by making sure all aspects of the roof framing design have been taken into account. This presentation will take you through the many aspects of a project that utilize trusses and show you what needs to be done to insure an outcome that satisfies everyone involved. Topics of discussion will include; framing concepts, load paths, special loading/framing conditions, and project workflow. There are many individuals involved in every project and each project is unique so understanding where the pitfalls could be is crucial to success.

About Mr. Babich: Bill Babich, P.E. is the Director of Engineering for TrusSteel. TrusSteel is a provider of Cold-Formed Steel (CFS) truss engineering and technology

utilizing the proprietary TrusSteel system. He has been involved in the prefabricated truss industry for the last 23 years and specifically with the CFS industry since 1997. Bill is a member of the American Society of Civil Engineers (ASCE), the AISI Committee on Framing Standards (COFS) and the Cold-Formed Steel Engineers Institute (CFSEI). He is the chairman of the AISI COFS Truss Subcommittee, a past chairman of the CFSEI Executive Committee, and the Treasurer of the Florida Chapter of CFSEI.



RESERVATIONS: For reservations, contact the Atlanta/SE Chapter Voice Mailbox at 866-465-4732, or fax this form to 202-452-1039; or email info@cfsei.org, attention: Rose Kuria. Please make reservations no later than **noon, January 26.**

YES I will be attending this meeting. **NO** I cannot attend this meeting (However I would like more information about CFSEI & its programs)

Name: _____

Firm: _____

Address: _____

City: _____ State: _____ Zip: _____

Phone: _____ Email: _____

Email: _____